

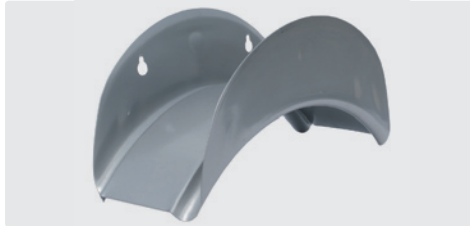
Mounting brackets

Hose holders



Holding capacity 1/2" = 40 m - 3/4" = 30 m. Hole size 140 mm. W x H x D = 260 x 165 x 170 mm

R+M Nr.	(M)
110 00	plastic



Holding capacity 1/2" = 40 m - 3/4" = 30 m. Hole size 140 mm. W x H x D = 280 x 140 x 130 mm

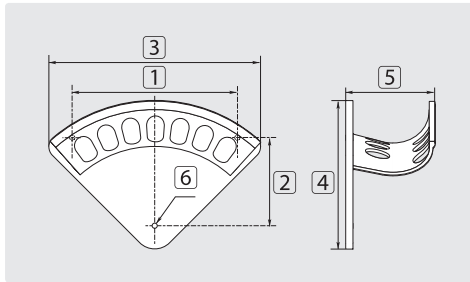
R+M Nr.	(M)
110 05	powder-coated steel



Holding capacity 1/2" = 40 m - 3/4" = 30 m. Hole size 125 mm. W x H x D = 360 x 200 x 170 mm

R+M Nr.	(M)
110 06	polished stainless steel

Hose holder aluminium



R+M Nr.	TYP	holding capacity	1	2	3	4	5	6
110 01	S	1/4" = 30 m - 3/8" = 20 m	155	77	188	145	70	∅ 5,5
110 02	M	3/8" = 30 m - 1/2" = 20 m	255	107	266	200	108	∅ 6,0
110 03	L	1/2" = 30 m - 3/4" = 20 m	272	145	348	255	143	∅ 8,0
110 031	XL	3/4" = 30 m - 1" = 20 m	366	162	417	307	187	∅ 10,0

Brush holder



Suitable for all brushes. Hole size 202 mm. W x H x D = 250 x 90 x 100 mm

R+M Nr.	(M)
108 290 30	stainless steel

Pre-spraying kits

Pre-spraying kits to connect to the tap



- » Lance with insulation 1200 mm
- » Suction hose 2 m. Spray hose 10 m
- » Spray nozzle 1/4" M 40° 15
- » For tap 3/4" F
- » Min. 2 bar - max. 10 bar
- » Output of approx. 150 l/h at 2 bar
- » Mixing of chemicals approx. 0 - 11,5 %
- » Please use backflow preventer (R+M Nr. 734 10)

R+M Nr.	(↔)
545 110	10 m
545 120	20 m
545 125	25 m

Hoses

Hoses for pre-spraying sets

R+M Nr.	(↔)
306 551 02	10 m
306 552 02	20 m
306 552 52	25 m

Low pressure injectors



Min. 2 bar - max. 10 bar. Output of approx. 150 l/h at 2 bar. Mixing of chemicals approx. 0 - 11,5 %

R+M Nr.	TYP	(G)	(↻)
200 060 700	1 ST-60.1	3/8" M	3/8" F
050 000 370	2 O-ring		
200 061 500	3 ST-61	hose tail	∅ 6 mm

Low pressure injectors

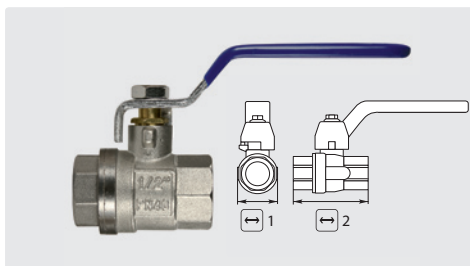


Injector with metering valve. Suction hose 1000 mm. Suction filter ST-31. 2 bar - max. 10 bar

R+M Nr.	(G)	(↻)
545 101	3/4" F	3/8" F

Ball valves

Standard



Nickel-plated brass. Ball chrome-plated. Max. 25 bar / 60 °C

R+M Nr.	(G)	(↔) 1	(↕) 2
705 10	1/4"	17 mm	45 mm
705 20	3/8"	20 mm	45 mm
705 30	1/2"	24 mm	50 mm
705 40	3/4"	31 mm	56 mm
705 50	1"	36 mm	69 mm